



C E R T I F I C A T E

Certificate registration number: G3.1604.084.1.C2

Certificate holder: Texas Instruments Inc.

Platform designation: TMDSPCKITV4-FCC,
Hardware version motherboard: SOMPLC-DOCKv1 rev4,
daughterboard: SOMPLC-FCC (TMS320F28375S),
Firmware version v7.7.6.10

Certification date: April 12th, 2016

This certificate indicates the above mentioned platform successfully completed certification testing with regards to the reference specification ITU G.9903 (02-2014) plus the changes listed in an annex to this certificate.

The certificate applies to certification profile FCC Multipurpose Worldwide and the device was configured as a PAN-Device.

Test cases have been performed as described in the test report referred to below. This certificate is granted on account of tests conducted by Laboratoire des Applications Numériques (LAN) in Tauxigny, France in March 2016. The results and remarks can be found in the complete test report.

| Applied tests | Performed by | Document evidence |
|--|---|-------------------|
| Conformance and interoperability testing according to the test specification referenced by the test report | Laboratoire des Applications Numériques (LAN) | LAN16AF022 |

The device tested is a G3-PLC platform: a solution providing an implementation of the G3-PLC specification. This certificate is valid from April 12th, 2016.

The certificate is only applicable to the platform described above and permits the use of the G3-PLC™ logo as laid down in the G3-PLC logo license agreement.

This certificate does not imply assessment of the production. This certificate shall not be defined, or used as a guarantee covering quality of a product which includes G3-PLC. The liability of the Alliance and the test laboratory or any of her representatives is excluded for any damages or losses of the certified company.

Paris, April 12th, 2016

For the G3-PLC Alliance:


Bernard Lassus
Chairman



Madeleine Francillard
Chair Certification Program





Annex 1: Reference Version for Certification

The reference version for this certificate is published in 'Narrowband OFDM PLC specifications for G3-PLC network, April 2015'.

The reference version for this certification is:

ITU-T G.9903 (02-2014)

- + CCTT #24-25-30: Implementation of MAC security (anti-replay) solution F1
- + CCTT #61: ADPM-Buffer behavior clarification
- + CCTT #143: AC Phase Detection v2
- + CCTT #144: Hop Limit usage during route repair v3
- + CCTT #145: Value of RCCoord when the node is at adpMaxHops hops from the coordinator
- + CCTT #146: Pilot tone generation
- + CCTT #147: Link-cost computation for Path discovery v2
- + CCTT #148: Path discovery frame routing v3
- + CCTT #152: Scrambler reset
- + CCTT #154: Clarification of PANCount and PANDescriptor
- + CCTT #156: Clarification of ADPM-NETWORK-STATUS.indication
- + CCTT #157: Interleaver Equation v2
- + CCTT #158: Unicast Routing Process
- + CCTT #159: Correct the windowing function description
- + CCTT #160: Clarify 16QAM quantisation and optionality
- + CCTT #161: Correct aMaxFrameSize and aMinFrameSize for FCC/ARIB bandplans
- + CCTT #162: Interleaver co-prime number clarification v2
- + CCTT #163: CRC5 and CRC8 packing order
- + CCTT #164: Route Repair v2
- + CCTT #165: Clarification Neighbour Table v2
- + CCTT #167: HOP COUNT metric identifier v2
- + CCTT #169: Clarification on PLME_GET v4
- + CCTT #170: Clarification to Frame Counter Handling Mechanism v2
- + CCTT #172: Windowing in coherent mode
- + CCTT #173: Clarification of LOADng mechanism used to detect bidirectional links
- + CCTT #174: Avoiding duplicated MAC packets
- + CCTT #175: LOADng - subsequent RREP generation
- + CCTT #176: Link cost function of LQI v3
- + CCTT #177: Broadcast routing - filtering frames on the source
- + CCTT #178: Coexistence of G3-PLC with other PLC technologies v3
- + CCTT #179: RREP Filtering v3
- + CCTT #181: Route Repair v2



Annex 2: Protocol Implementation Conformance Statement (PICS)

Feature implementation statement

| Name | Value | Description |
|--|-------|--|
| BAND_PLAN | FCC | Indicate the band-plan supported by the device. |
| FEATURE_PAN_COORDINATOR | FALSE | Indicate if the device is a PAN-Coordinator (true) or a normal device (false). |
| FEATURE_COHERENT_MODULATION | FALSE | Indicate if coherent modulation is supported. |
| FEATURE_EAP_SERVER | FALSE | Indicate if an EAP-PASK server is implemented by the DUT. Apply only if FEATURE_PAN_COORDINATOR = true. |
| FEATURE_D8PSK_MODULATION | TRUE | True / False |
| FEATURE_ROUTING | TRUE | Indicate if the routing is implemented by the IUT. |
| FEATURE_SECURITY | F1 | Indicate the security implemented by the device. Possible values are: F1, F2. |
| FEATURE_ACTIVE_SCAN | TRUE | Indicate if the active scan process is done by the IUT after power-up. |
| FEATURE_PREAMBLE_COEXISTENCE_MECHANISM | FALSE | Indicate if the preamble-based coexistence mechanism is used by the IUT. |

Handwritten signature or initials.



Annex 3: Copy of test report cover sheet



| G3-PLC Certification Test Report | | | |
|----------------------------------|--|----------------|-----------|
| Texas Instruments | TMDSPCLKITV4-FCC HW:Mother B :SOMPLC-DOCKv1 rev4 Daughter B:SOMPLC-FCC (TMS320F28375S) FW: v7.7.6.10 | | |
| LAN16AF022 | Ed.00 | March 15, 2016 | Page 1/25 |

G3-PLC Alliance

G3-PLC Platform Certification Test Report

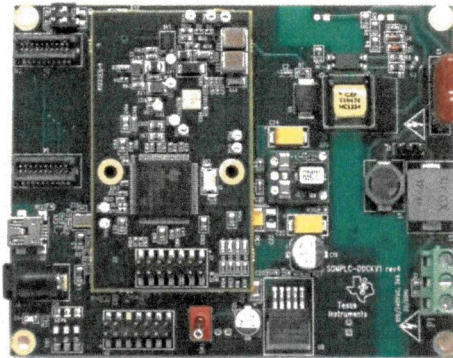
Vendor Name **Texas Instruments**
 Model Name **TMDSPCLKITV4-FCC**
 Serial N° **001(Internal)**
 HW version **Mother B : SOMPLC-DOCKv1 rev4 Daughter B:SOMPLC-FCC (TMS320F28375S)**
 FW version **v7.7.6.10**

Test Report # **-TR_LAN16AF022 Ed.00**
 Date **March 15, 2016**

CONF Tests Specification **version 0.19. 01/09/2015**
 CONF Tests Suite **version 2.1. 10/2015**
 IOT Tests Specification **version 0.7. 21/04/2015**
 IOT Tests Suite **version 2.1. 10/2015**

Test Tool **version 1.7**
 Tester Modem **version 1.09**
 Certification Test Procedures **version 1.6. 31/12/2015**

Certification Profile **C (FCC)**
 Role **PAN Device**
 Overall Verdict **PASS**



| Initiation | Date | Description of modification | Ed. |
|------------|----------------|-----------------------------|-----|
| Omar DIOUF | March 15, 2016 | Creation | 00 |

| Name | Realised by | Checked by | Approved by |
|------|----------------|-----------------|-----------------|
| | Omar DIOUF | Vincent BUCHOUX | Thierry DOLIGEZ |
| Date | March 15, 2016 | March 15, 2016 | March 15, 2016 |

| Sign | | | |
|------|--|--|--|
| | | | |

The current report and the test results produced in this current are given for information only and must not be relied on by any third person for any reason.
 This report contains an assessment of the apparatus carried out on samples submitted to the laboratory. The results in this report relate only to the items tested and were obtained in the period between the receipt of samples and the issue of the report. It should be noted that technical hardware or software modifications on the apparatus may impact the results reported in this document.



Annex 4: Additional details of the certified platform

| | |
|---|--|
| Platform model name: | TMDSPLCKITV4-FCC |
| Platform hardware version: | Mother Board: SOMPLC-DOCKv1 rev4 Daughter Board: SOMPLC-FCC (TMS320F28375S) |
| Platform firmware version: | v7.7.6.10 |
| Exact part number of all the chips running G3-PLC stack in the certified platform: | TMS320F28375SPZPT |
| What each part number runs: lower MAC (incl. CSMA/CA) or PHY or other parts of the stack: | PHY+MAC+6LP |
| Hardware version of this chip: | (blank) |
| Software version running on this chip: | v7.7.6.10 |
| Operating frequency: | 150 MHz |

Handwritten signature