



C E R T I F I C A T E

Certificate registration number: G3.2304.570.1.A6

Certificate holder: Semitech Semiconductor Pty Ltd

Platform designation: SM2500,
Hardware version SM8500-EFR32FG-SGM8423-A,
Firmware version HYBC-PAND-230324

Certification date: April 27th 2023

This certificate indicates the above-mentioned platform successfully completed certification testing with regards to the G3-Alliance reference specification 06/2021. The optional features Hybrid PLC+RF and coherent mode of the G3-PLC protocol are also covered by this certification.

The certificate applies to certification profile CENELEC A and the device was configured as a PAN-Device.

Test cases have been performed as described in the test report referred to below. This certificate is granted on account of tests conducted by Laboratoire des Applications Numériques (LAN) in Tauxigny, France in March - April 2023. The results and remarks can be found in the complete test report.

Applied tests	Performed by	Document evidence
Conformance, interoperability and performance testing according to the test specification referenced by the test report	Laboratoire des Applications Numériques (LAN)	LAN22AF011

The device tested is a G3-Hybrid PLC+RF platform: a solution providing an implementation of the G3-PLC specification. The Protocol Implementation Conformance Statement in the Annex includes the PICS related to performance and is an integral part of this certificate. This certificate is valid from April 27th 2023.

The certificate is only applicable to the platform described above and permits the use of the G3-PLC™ logo as laid down in the G3-PLC logo license agreement.

This certificate does not imply assessment of the production. This certificate shall not be defined, or used as a guarantee covering quality of a product which includes G3-PLC. The liability of the Alliance and the test laboratory or any of her representatives is excluded for any damages or losses of the certified company.

Paris, April 27th 2023

For the G3-Alliance:

Marc Delandre
Chairman

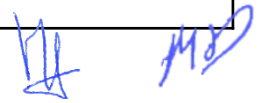
Madeleine Francillard
Chair Certification Program

G3-Alliance

Annex 1: Protocol Implementation Conformance Statement (PICS)

Feature implementation statement

Name	Value	Description
BAND_PLAN	CENELEC A	Indicate the band-plan supported by the device.
BAND_PLAN_RF	863-870_SingleCarrier_Mode#1	Indicate the RF band plan(s) supported by the device
FEATURE_HYBRID_RF	TRUE	Indicate if Hybrid PLC&RF feature is supported.
FEATURE_PAN_COORDINATOR	FALSE	Indicate if the device is a PAN-Coordinator (true) or a normal device (false).
FEATURE_COHERENT_MODULATION	TRUE	Indicate if coherent modulation is supported.
FEATURE_EAP_SERVER	FALSE	Indicate if an EAP-PASK server is implemented by the DUT. Apply only if FEATURE_PAN_COORDINATOR = true.
FEATURE_D8PSK_MODULATION	TRUE	Indicate if D8PSK modulation is supported
FEATURE_ROUTING	TRUE	Indicate if the routing is implemented by the IUT.
FEATURE_SECURITY	F1	Indicate the security implemented by the device. Possible values are: F1, F2.
FEATURE_ACTIVE_SCAN	TRUE	Indicate if the active scan process is done by the IUT after power-up.
FEATURE_PREAMBLE_COEXISTENCE_MECHANISM	FALSE	Indicate if the preamble-based coexistence mechanism is used by the IUT.





Annex 2: Protocol Implementation Conformance Statement (PICS)

PICS related to performance

The device tested is a G3-Hybrid Cenelec A platform. Testing was performed on phase 1. Operating voltage applied for certification testing was 230V/50Hz .

Name	Value	Unit	Description
<p>PICS related to performance are available through vendor only.</p>			

Annex 3: Copy of test report cover sheet

Expanding networks

G3-PLC Certification Test Report

Semitech Semiconductor Pty Ltd SM2500 HW:SM8500-EFR32FG-SGM8423-A FW: HYBC-PAND-230324

LAN22AF011 Ed.00 April 25, 2023 Page 1/58

G3-PLC Hybrid Platform Certification Test Report

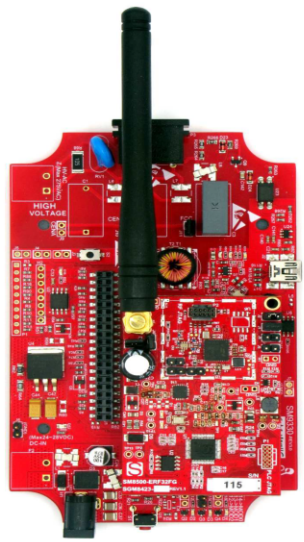
Vendor Name **Semitech Semiconductor Pty Ltd**
 Model Name **SM2500**
 Serial N° **SM4M99HF**
 HW version **SM8500-EFR32FG-SGM8423-A**
 FW version **HYBC-PAND-230324**

Test Report # **TR_LAN22AF011 Ed.00**
 Date **April 25, 2023**

CONF G3-PLC Tests Specification	version 0.37	18/01/2022
CONF G3-PLC Tests Suite	version 2.14.p1.	12/2022
CONF HYBRID Tests Specification	version 0.10.	15/03/2021
CONF HYBRID Tests Suite	version 1.3.p2.	12/2021
IOT G3-PLC Tests Specification	version 0.14.	11/11/20
IOT G3-PLC Tests Suite	version 2.7.	11/2021
IOT HYBRID Tests Specification	version 0.7.	14/09/2021
IOT RF Tests Suite	version 1.3.	03/2022
PERF G3-PLC Tests Specification	version 0.27.	05/03/2019
PERF G3-PLC Tests Suite	version 2.14.p1.	12/2022

Test Tool PLC **version 3.2**
 Tester Modem PLC **version 2.0.1**
 Tester Modem PLC+RF **version 7**
 Certification Test Procedures **version 6.04** **06/09/2022**

Certification Profile **HYBRID : CENELEC A - RF**
 Role **PAN Device**
 Overall Verdict **PASS**



Initiation	Date	Description of modification	Ed.
Omar DIOUF	April 25, 2023	Creation	00

Name	Realised by	Checked by	Approved by
	Omar DIOUF	Vincent BUCHOUX	Thierry DOLIGEZ
Date	April 25, 2023	April 25, 2023	April 25, 2023
Sign			

The current report and the test results produced in this current are given for information only and must not be relied on by any third person for any reason.
 This report contains an assessment of the apparatus carried out on samples submitted to the laboratory. The results in this report relate only to the items tested and were obtained in the period between the initial receipt of samples and the issue of the report. It should be noted that technical hardware or software modifications on the apparatus may impact the results reported in this document.



Annex 4: Additional details of the certified platform

Platform model name:	SM2500	
Platform hardware version:	SM8500-EFR32FG-SGM8423-A	
Platform firmware version:	HYBC-PAND-230324	
Exact part number of all the chips running G3-PLC stack in the certified platform:	Chip #1: SM2400	Chip #2: EFR32FG12P433F1024G
What each part number runs: lower MAC (incl. CSMA/CA) or PHY or other parts of the stack:	PLC-PHY and PLC-MAC	6LowPAN and RF-MAC and RF-PHY
Hardware version of this chip:	SM2400	C
Software version running on this chip:	HYBC-PAND-230324	HYBC-PAND-230324
Internal CPU frequency:	60 MHz	38.4 MHz

[Handwritten signatures]