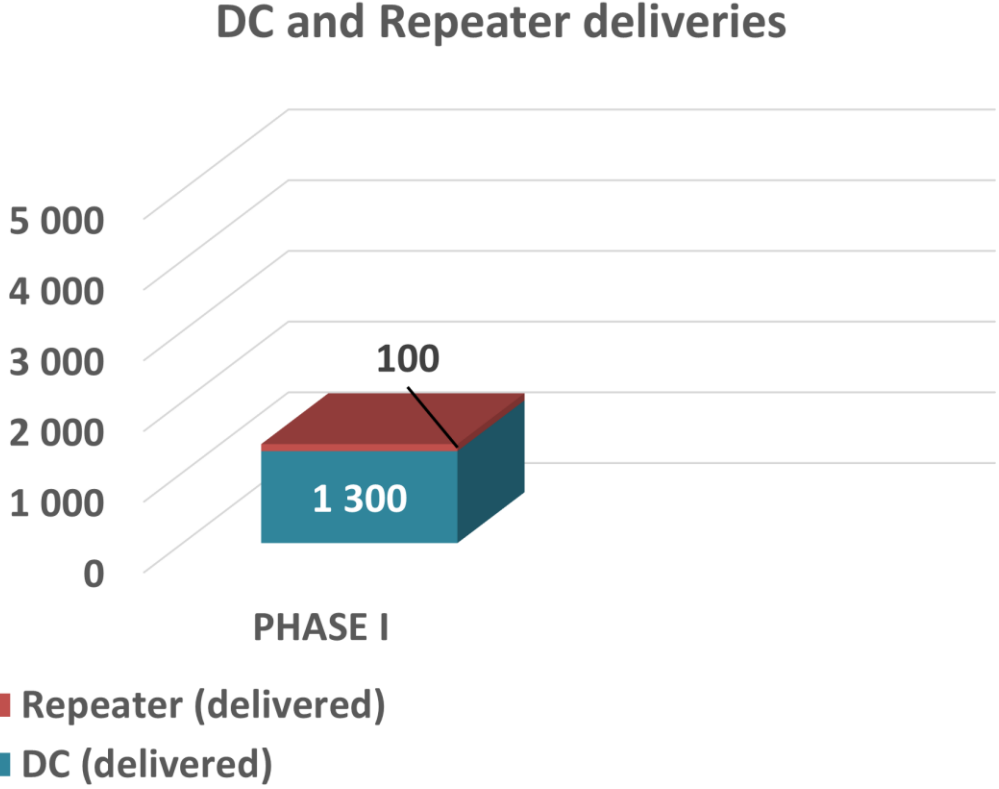
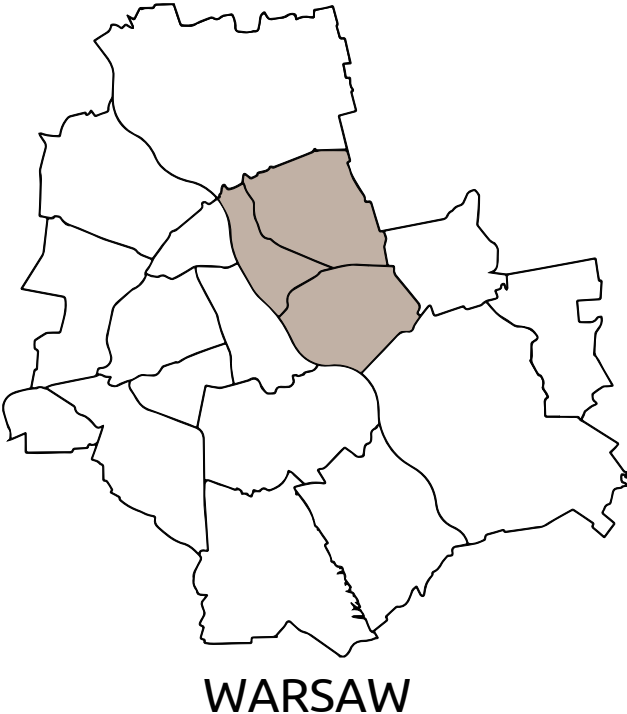
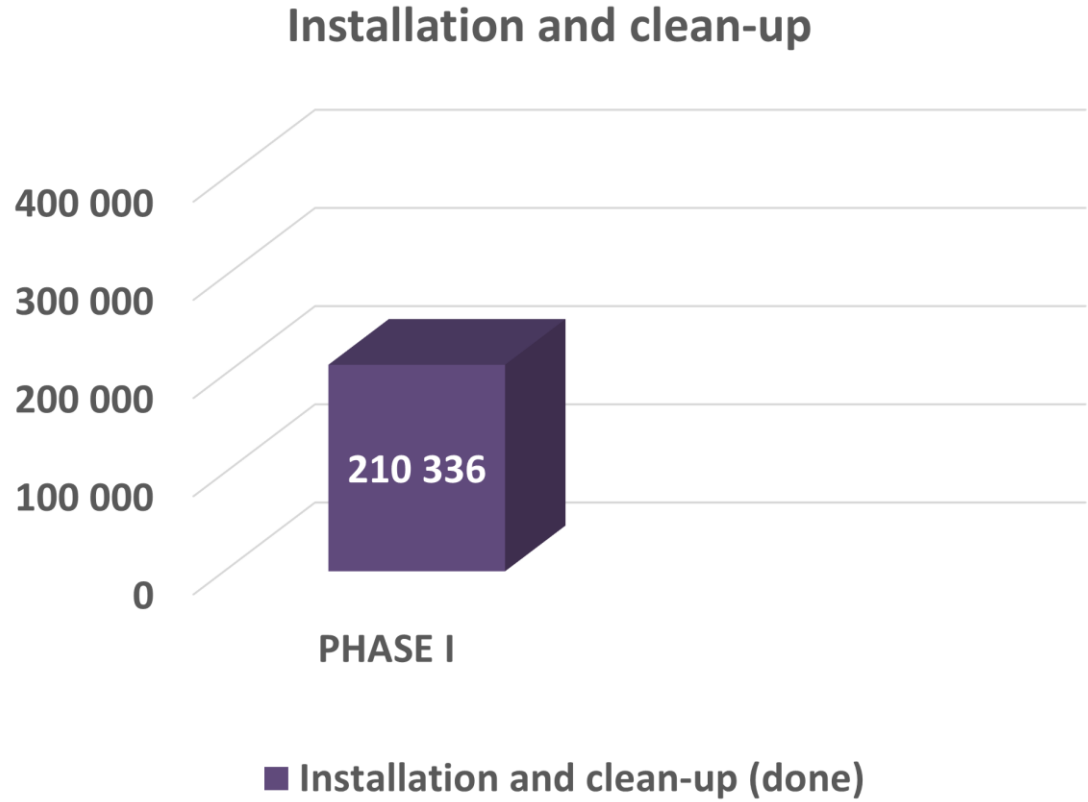
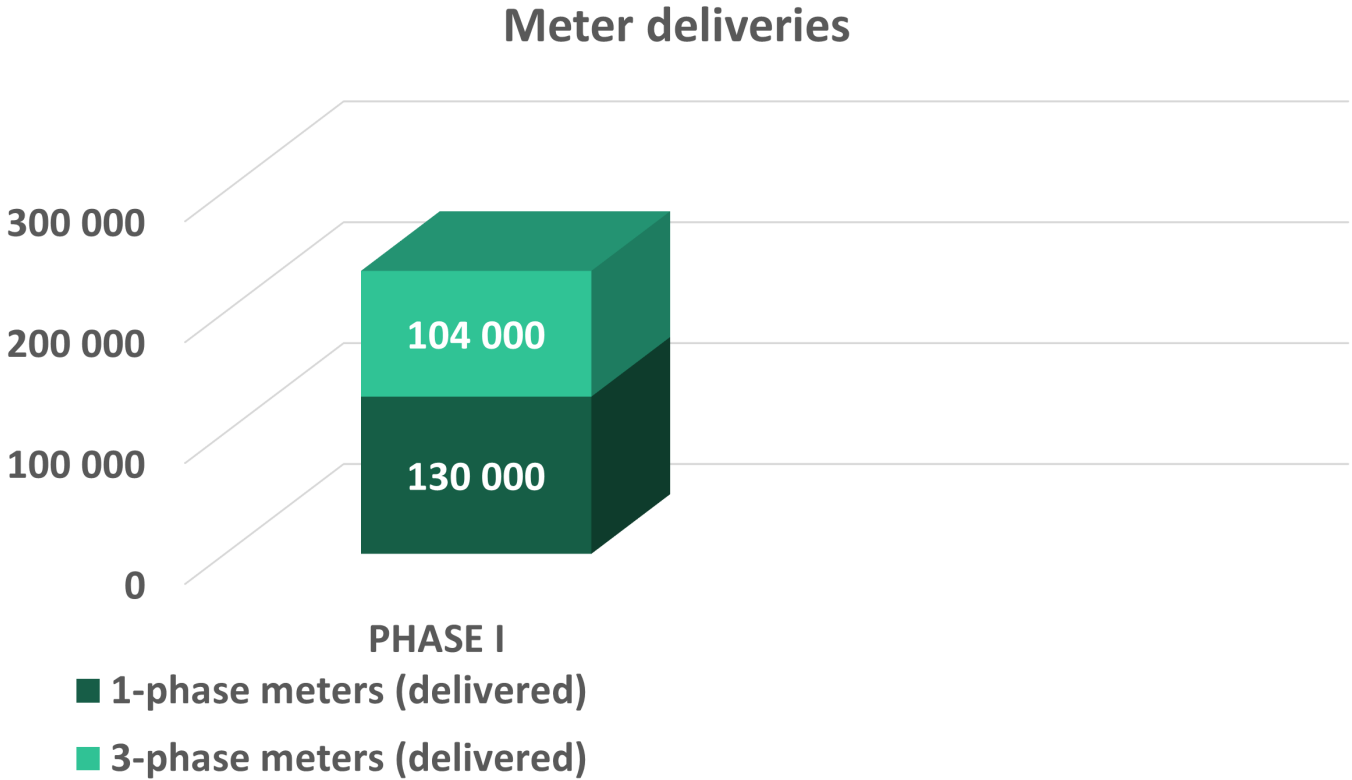


G3 PLC technology rollout in Poland

Nerijus Kruopis | UAB „Elgama-Elektronika”
Kuba Kurnik | ESMETRIC Group

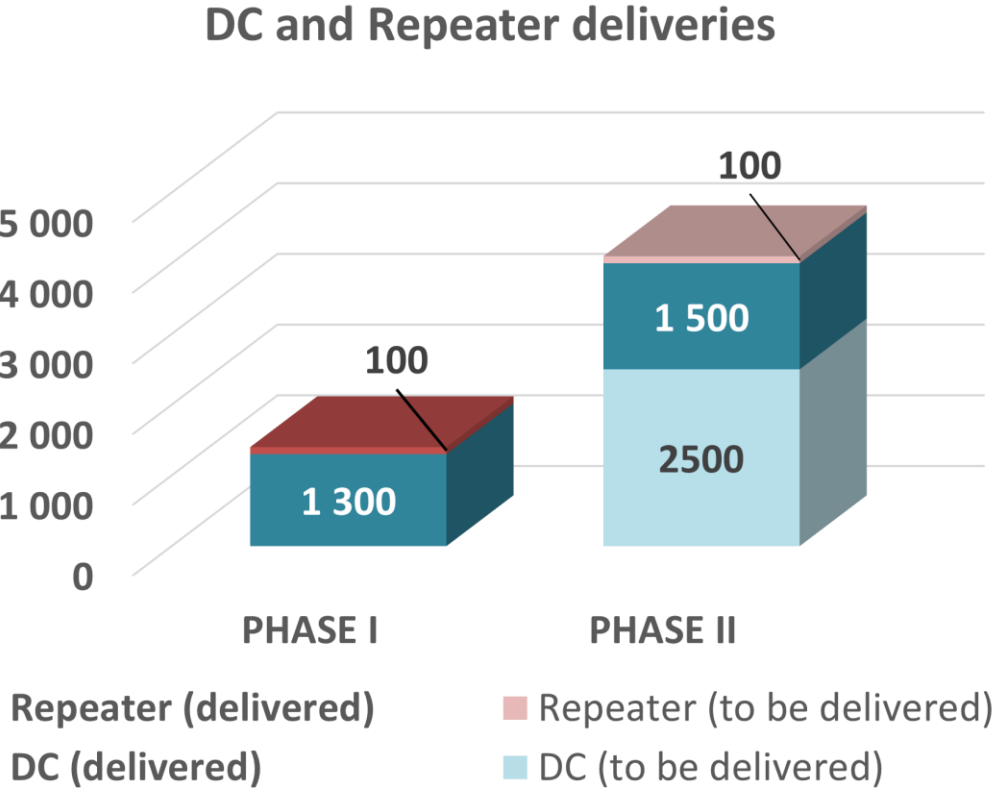
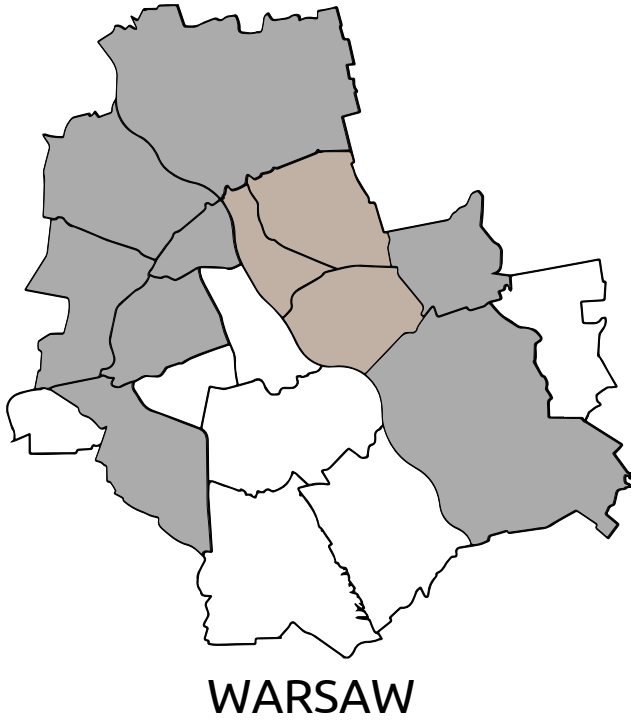
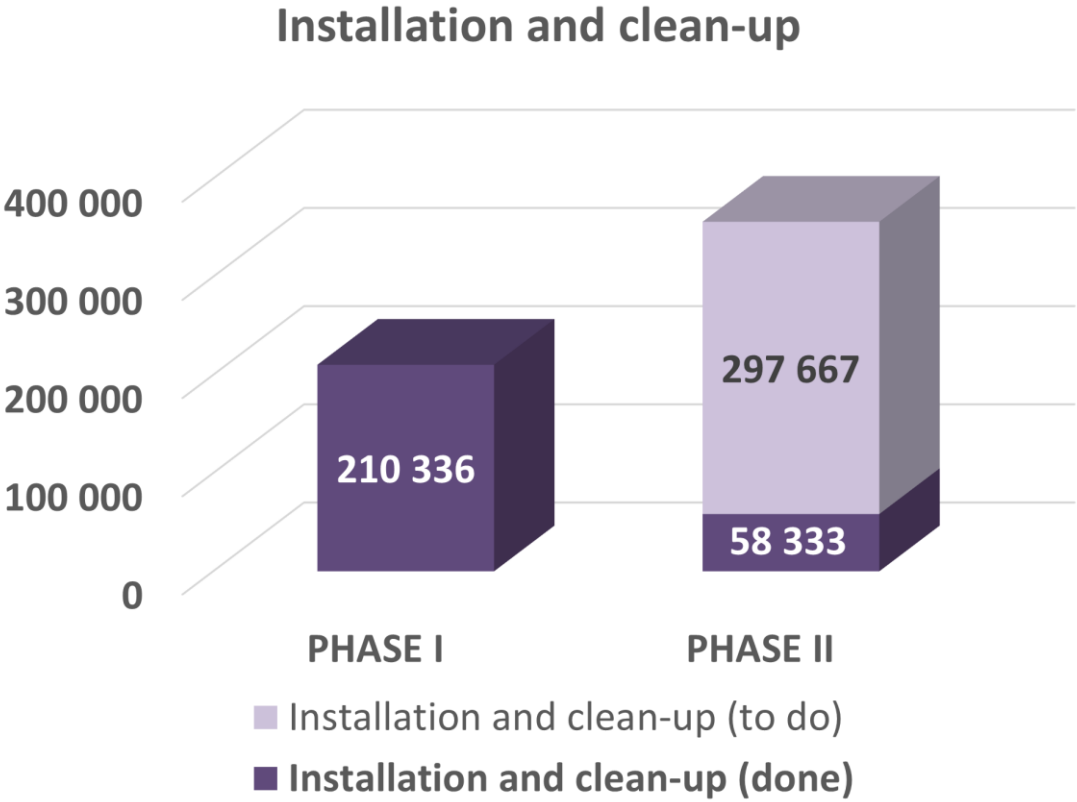
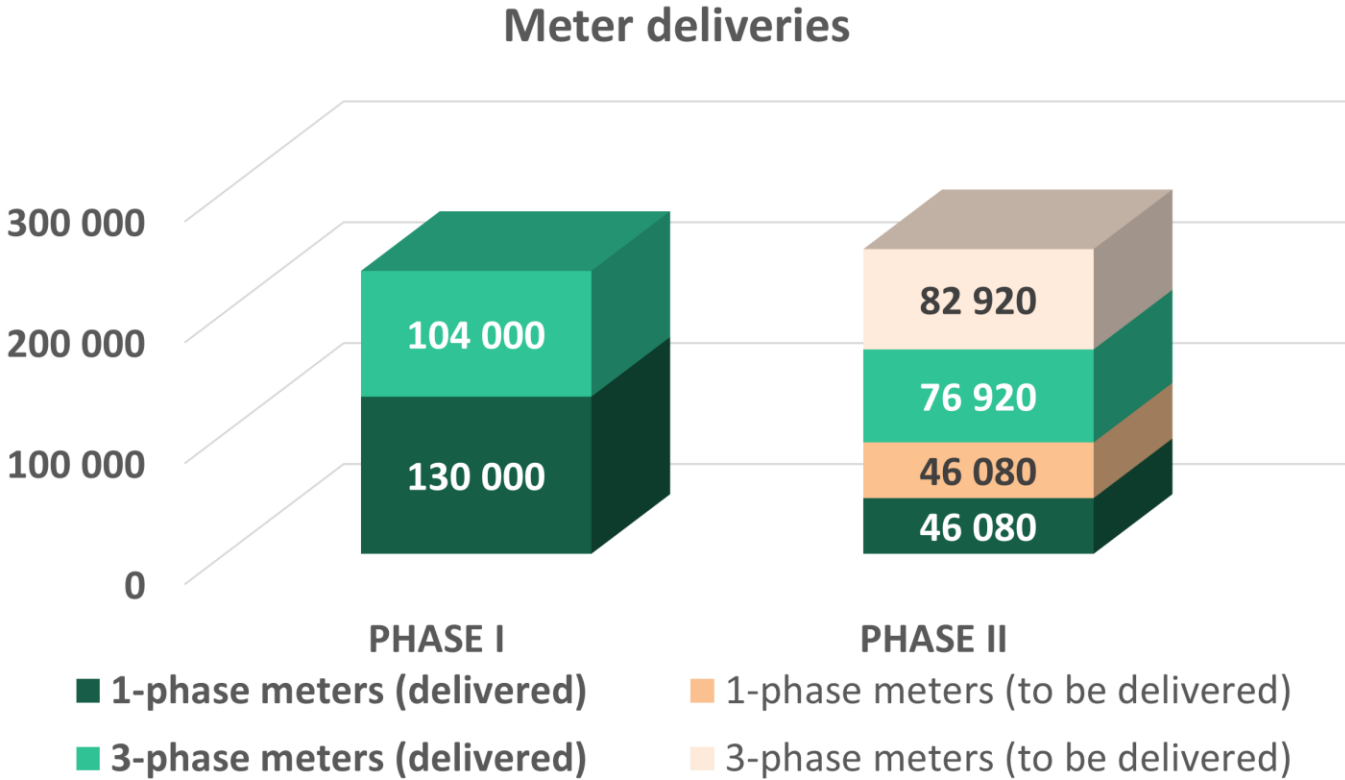


Phase I of AMI Project



Phase I (completed) 
April 2022 – June 2024

Phase I & II of AMI Project

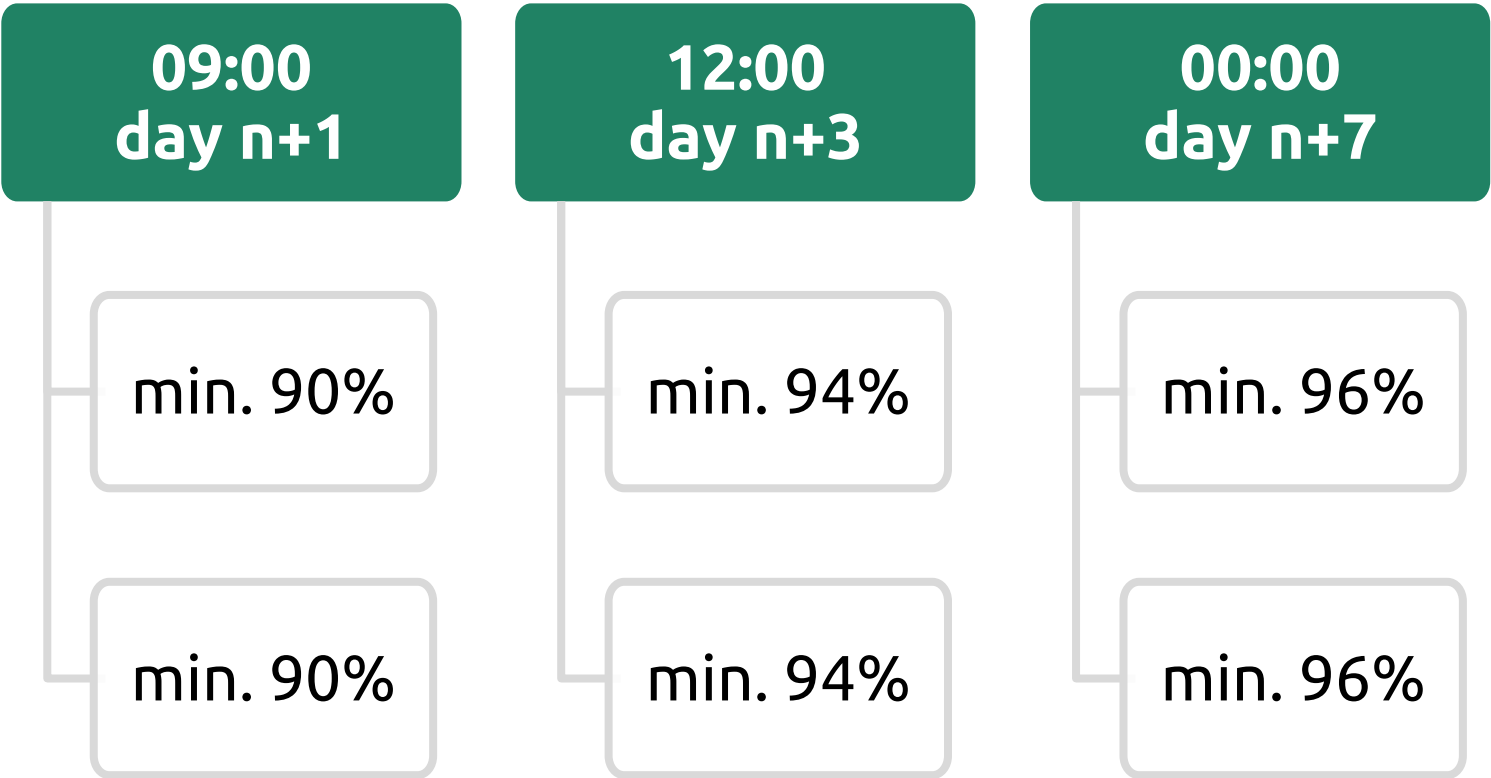


Key objectives of the Project Regulation



Load profile for day „n”
(6 energy values / 15 min period)

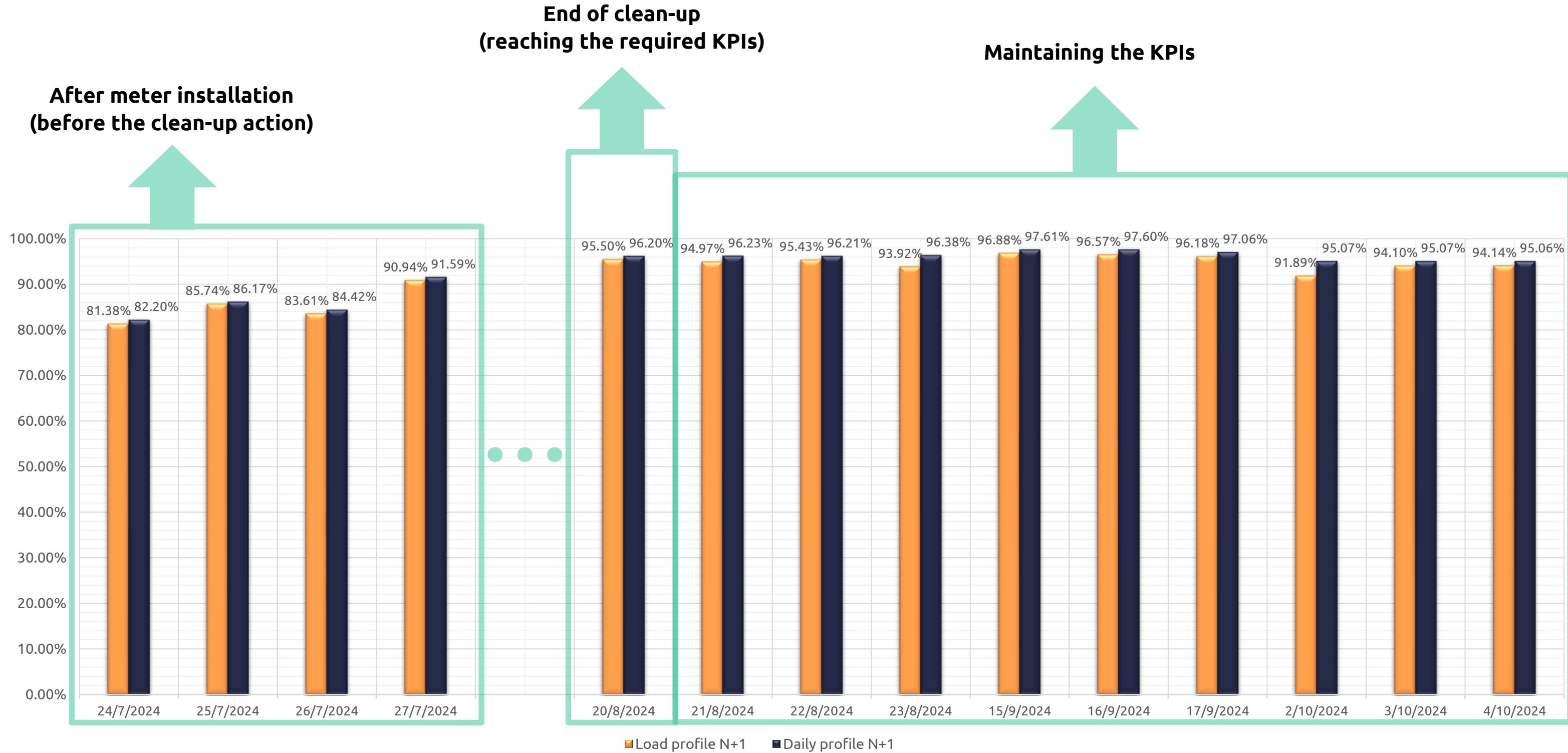
Daily profile for day „n”
(30 energy values)



The presented KPIs result from the Regulation on the measurement system in Poland.

Key objectives of the Project

Example area of 9600 meters from Phase II (profile N+1)



Changes and improvements Phase I vs. Phase II

1 Changing the default band-plan
from CENELEC A to FCC

2 Home Area Network
– P1 port instead of wMBus interface

3 Integration of the second supplier's
meters with Data Concentrator

- Creation of DLMS COSEM specification for the second meter supplier
- Tests of PLC communication
- Successful launch of the mixed installation in the pilot area

4 Integration of the Data Concentrator
with Utility's Head End System

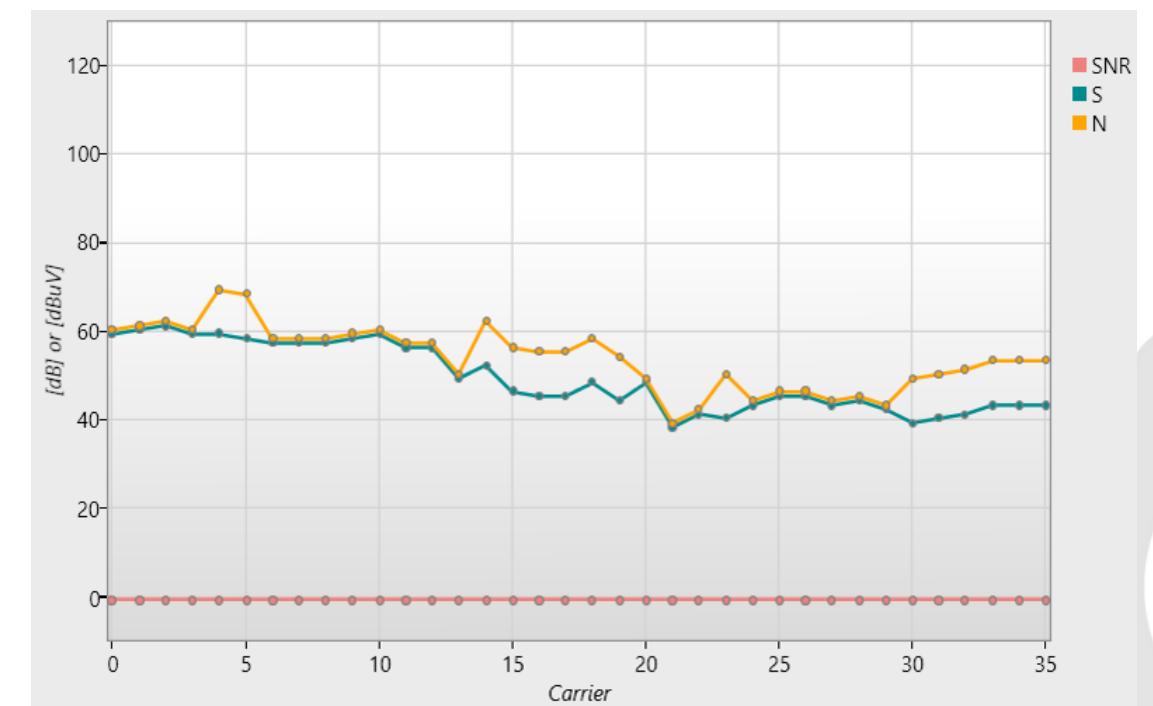
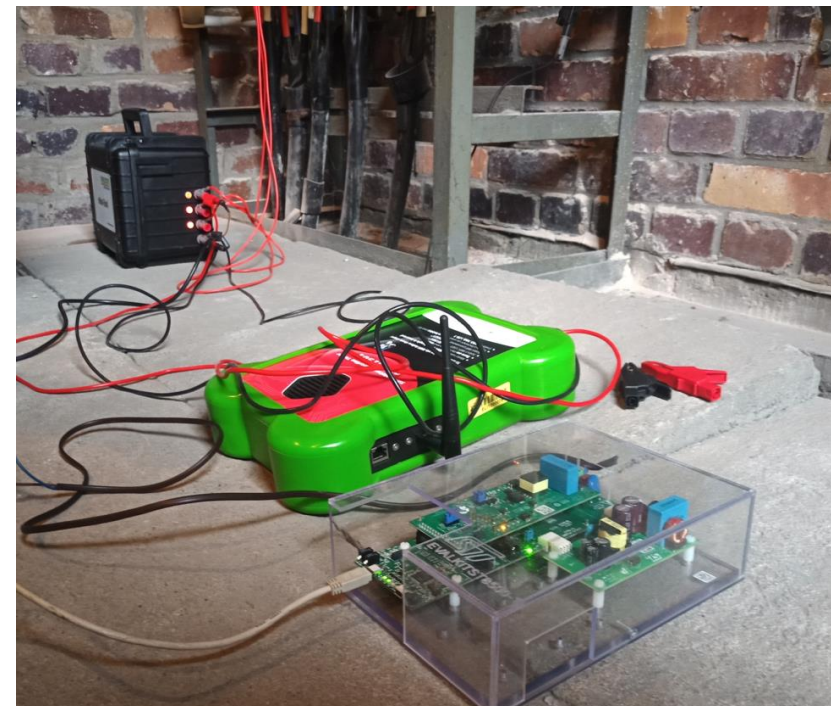
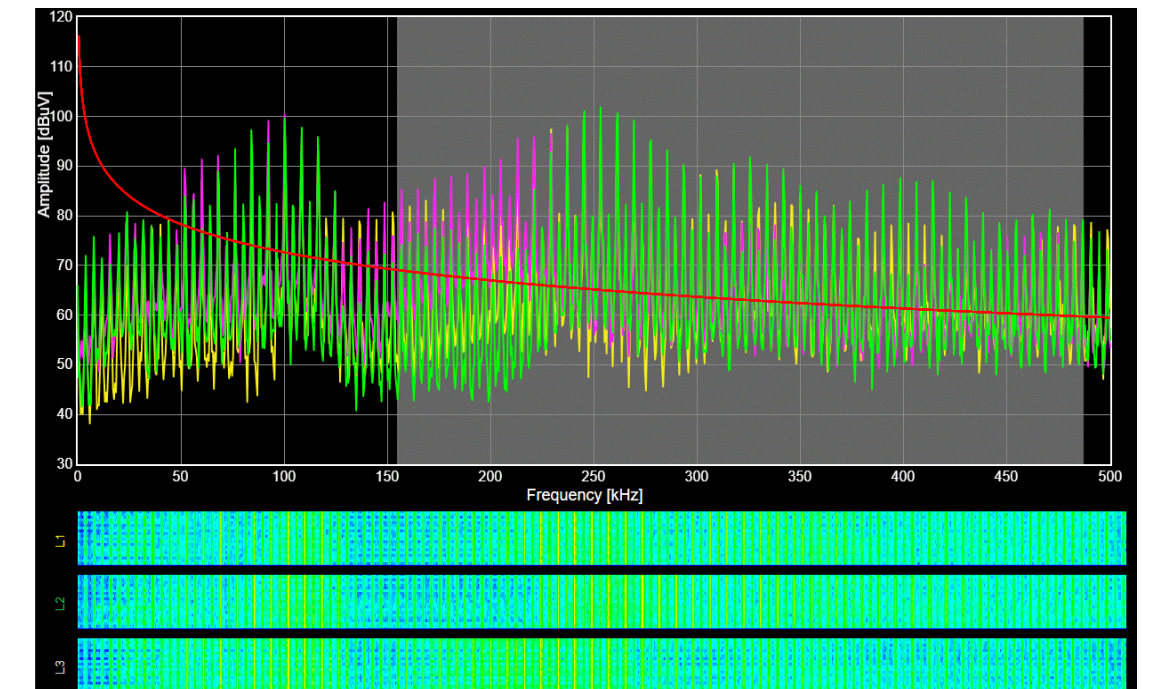
Clean-up action

Problems detected

Interferences

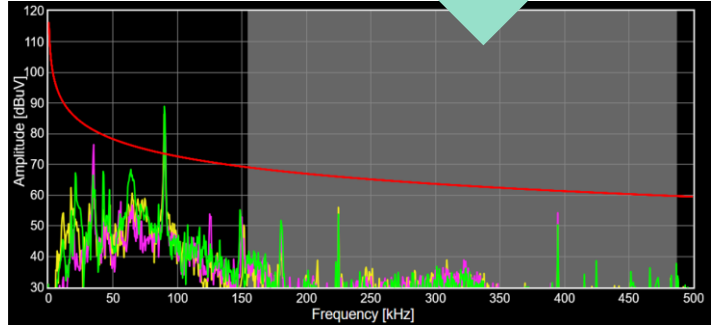
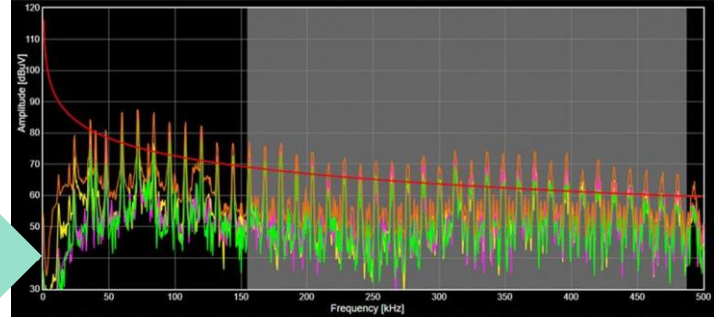
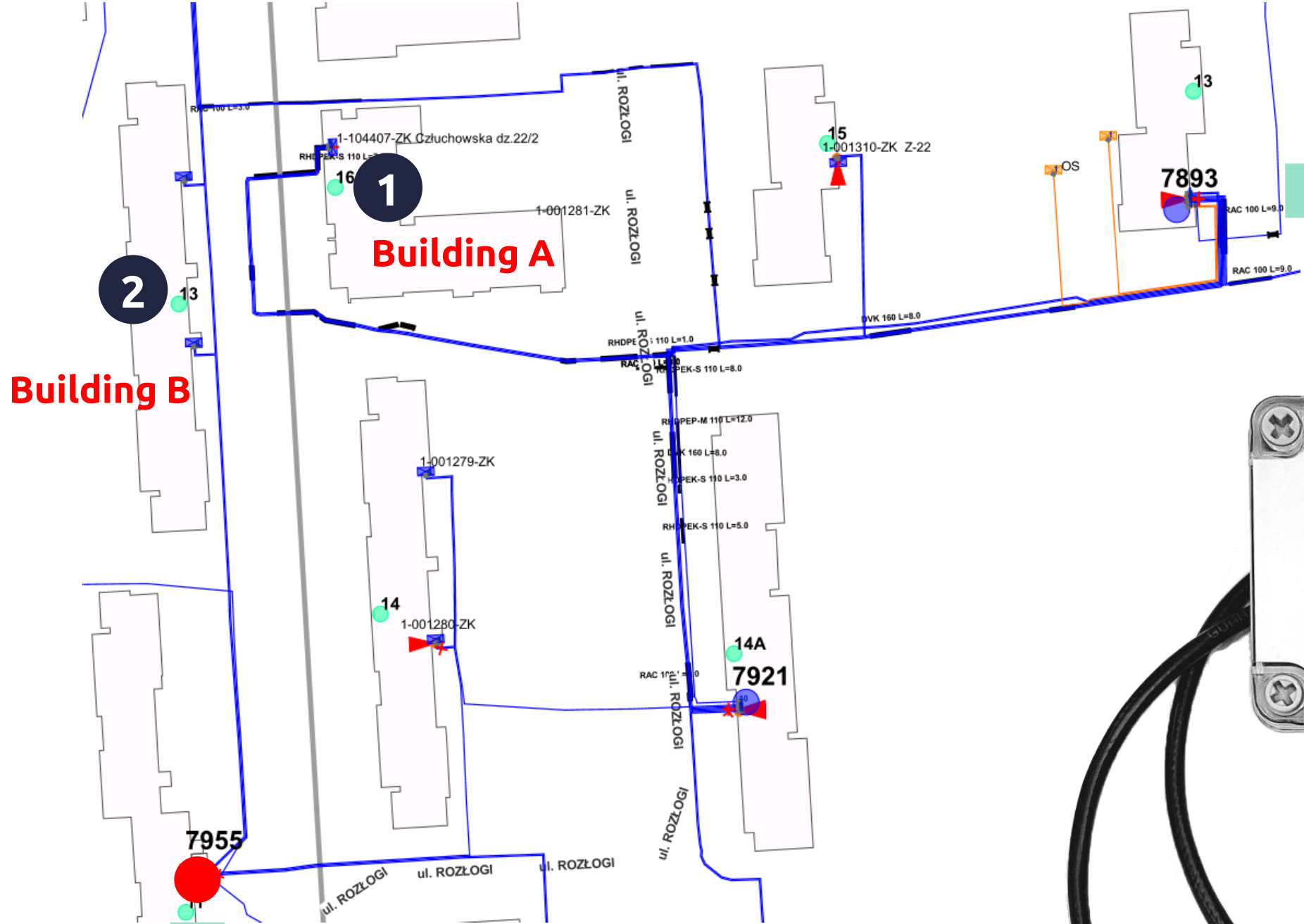
Meters incorrectly registering to neighboring concentrators

Poor technical condition of the network and long distances between PLC devices



G3-PLC+RF repeater

Proof of concept



Q&A

You are welcome to ask questions.

